

CN Construct 4 - 10 mm, cracked

Cultivable filter body

CN Construct 4 - 10 mm cracked is a ceramic filter unit especially designed for use in plant water treatment systems.

It is based on selected clay minerals, which have a defined large surface area due to a carefully controlled production process.,

The granule structure, granule composition and chemical neutrality simultaneously provide ideal planting soil for reposition plants.

CN Construct 4 - 10 mm cracked is characterised by the following features:

- ◆ Large surface area
- ◆ Good colonisability
- ◆ Neutral to plants
- ◆ Promotes root growth
- ◆ High airflow
- ◆ Good flow profile
- ◆ Frost-proof
- ◆ Structurally stable
- ◆ Quality tested

CN Construct 4 - 10 mm cracked is a purely natural product of consistently high quality which allows the construction of especially high-capacity plant water treatment plants

A decisive factor in the capacity of a plant water treatment plant is the colonisation density of the filter body and the large contact surface with the wastewater.

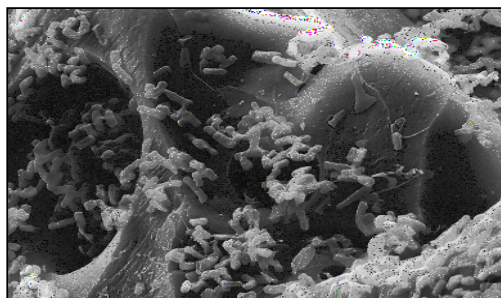
CN Construct 4 - 10 mm cracked combines the advantages of a fine sand filter (large colonisation surface) with those of a gravel filter (high air and water permeability) all in one.

The irregularly shaped, graduated ceramic bodies counteract the so-called flow channelling and ensure permanent turbulence in the filter bed.

Technical Data

Grading curve	4 - 10 mm	Aeration capacity:	approx. 51 Vol.%
Bulk Weight		at max. water saturation	
Dry	approx. 290 kg/m ³	Water-bearing surface:	approx. 400 m ² /l
Waterlogged	approx. 360 kg/m ³	Colonisable surface:	approx. 60 m ² /l
Inherent strength of granules:	1,06 N/mm ²	Water permeability:	> 600 mm/min.
		mod. K*	

REM - image - colonised surface at 1800 x magnification



Last updated: August 2021